




*Institute for Innovation
and Improvement*

The background features a collage of images: a person writing on a whiteboard with orange and white markers, and a group of people in business attire sitting in an audience. A large blue diamond shape is overlaid on the left side of the slide.

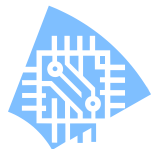
NLH and eLearning
Presented by
Angie Clarke
(Head of Service)

NLH – Contribution to eLearning

Background

- ✓ The NHS Institute for Innovation and Improvement (NHS I²) remit is to:
 - ✓ ‘Improve health outcomes
 - ✓ Raise the quality of delivery in the NHS, by
 - ✓ Accelerating the uptake of proven innovation and improvements in healthcare...’

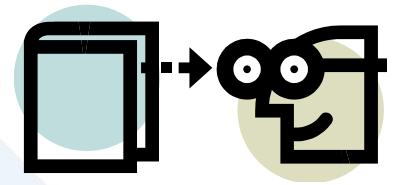
- ✓ The National Library for Health (NLH):
 - ✓ Part of the NHS I², a
 - ✓ Modern, integrated, hybrid service
 - ✓ Aim - to be ‘the best, most trusted health related knowledge service in the world’



NLH – Contribution to eLearning

Background

- ✓ The NLH **‘Personalisation Programme’** supports the above NHS III and NLH agendas by:
 - ✓ Providing a platform for personal learning
 - ✓ Incorporating tools to support reflective practice and lifelong learning
 - ✓ Supporting discovery of learning objects



NLH – Contribution to eLearning

NLH objectives are to:

- ✓ Procure a ‘eLearning Object Repository’ that conforms to NLH ‘Enterprise Architecture requirements’
- ✓ Provide an extensible ‘search and discovery platform’ (via web services) for eLearning objects held both within the repository and at external locations
- ✓ Identify, quality assure, manage and classify ‘eLearning objects’



NLH – Contribution to eLearning

Deliverables a:

- ✓ Platform to house eLearning objects
- ✓ Taxonomy/Taxonomies to support access to eLearning objects
- ✓ Quality Assurance (QA) system to:
 - ✓ Identify
 - ✓ Manage, and
 - ✓ Maintain eLearning objects



NLH – Contribution to eLearning

In-Scope

- ✓ Development of a national repository to:
 - ✓ House eLearning objects for the NHS, which is
 - ✓ Structured by the use of an agreed taxonomy or taxonomies to
 - ✓ Enable best access to eLearning by the NHS in the first instance, and by
 - ✓ Key strategic partners in the future

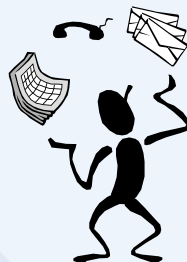
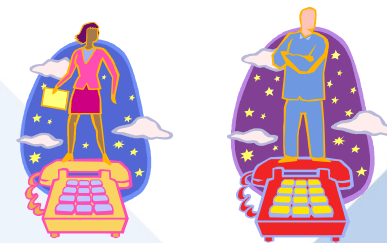
Out of Scope

- ✓ The **development of a national platform** (to deliver and manage eLearning for the NHS)

NLH – Contribution to eLearning

Benefits of a ‘Central Repository’:

- ✓ Improved value for money
- ✓ More efficient ways of working
- ✓ Improved eLearning skills in NHS workforce



NLH – Contribution to eLearning

Related Projects

- ✓ CfH (Connecting for Health)
- ✓ RITI (Radiology Integrated Training Initiative)
- ✓ CLU (Core Learning Unit)
- ✓ ESR (Electronic Staff Record)
- ✓ SfH (Skills for Health)
- ✓ NHS-HE Connectivity Project

NLH – Contribution to eLearning

Stakeholders

- ✓ NLH (including 1250 Health Librarians)
- ✓ SHAs/Deaneries
- ✓ Trusts
- ✓ Key partners eg
 - ✓ Social Services
 - ✓ HEIs (Higher Education Institutions)

NLH – Contribution to eLearning

Timescales

- ✓ Phase I (December 2007 – March 2008) to:
 - ✓ Procure a **managed repository** by 31st March, 2008
 - ✓ **Start** the project and establish the **project organisation**

- ✓ Phase II (April 2008 – July 2008) to:
 - ✓ Sign off **PID** (Project Initiation Document)
 - ✓ Configure the '**basic functionalities**' of the repository
 - ✓ Begin **content contribution**
 - ✓ Engage with **project stakeholders**

NLH – Contribution to eLearning

Timescales

- ✓ Phase III (August 2008 – December 2008) to:
 - ✓ Develop **further** the repository's functionalities
 - ✓ Promote the **uptake** and **use** of the repository
 - ✓ Engage with project stakeholders and **develop a 'Community of Practice' (CoP)** around eLearning resource development and sharing

- ✓ Phase IV (January 2009 – March 2009) to:
 - ✓ **Evaluate** the lessons learnt
 - ✓ **Recommend** the **next stage plan** of the repository

NLH – Contribution to eLearning

Contract Awarded to:

A consortia lead by:

- ✓ MyKnowledgeMap

<http://www.myknowledgemap.com/>

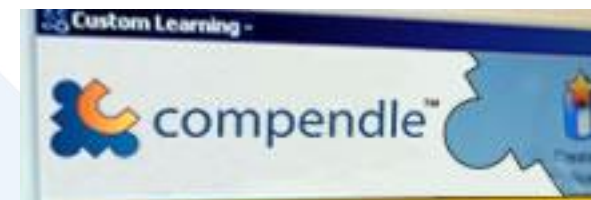
Partners are:

- ✓ Intrallect

<http://www.intrallect.com/index.php/intrallect>

- ✓ IVIMEDS

<http://www.ivimeds.org/>



NLH – Contribution to eLearning

It is intended that the ‘Beta rollout’ of the eLearning Object Repository will be in place by Summer 2008



NLH – Contribution to eLearning

Any Questions?



Contacts

- **Angie Clarke**
NLH Head of Service
angie.clarke@institute.nhs.uk
- **Bertha Low**
NLH eLearning Object Repository Project Manager
yuenman.low@institute.nhs.uk